

SG - 226

The SG - 226 is a photointerrupter consisting of GaAs IRED and phototransistor.

FEATURES

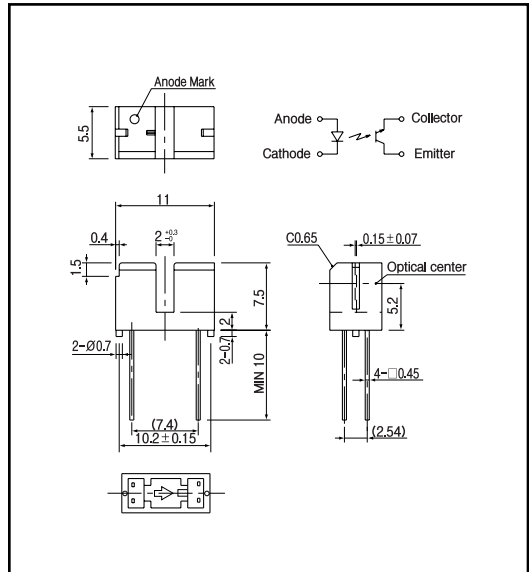
- 0.4mm aperture
- Easy to mount on P.C.B.
- Very compact

APPLICATIONS

- Floppy disk drives
- Camera

DIMENSIONS

(Unit : mm)



MAXIMUM RATINGS

(Ta=25 °C)

	Item	Symbol	Rating	Unit
Input	Power dissipation	P_D	100	mW
	Reverse voltage	V_R	5	V
	Forward current	I_F	60	mA
	Pulse forward current ^{*1}	I_{FP}	1	A
Output	Collector power dissipation	P_C	100	mW
	Collector current	I_C	40	mA
	C - E voltage	V_{CEO}	30	V
	E - C voltage	V_{ECO}	5	V
	Operating temp.	$T_{opr.}$	- 25 ~ +85	
	Storage temp.	$T_{stg.}$	- 30 ~ +85	
	Soldering temp. ^{*2}	$T_{sol.}$	260	

*1. t w 100 µsec.period : T=10msec.

*2. For MAX. 5 seconds at the position of 2mm from the package

ELECTRO-OPTICAL CHARACTERISTICS

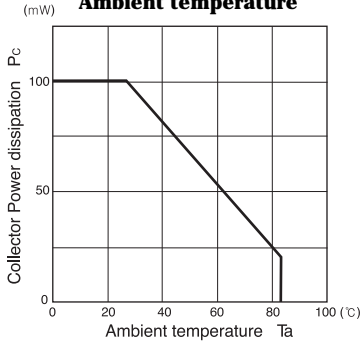
(Ta=25 °C)

	Item	Symbol	Conditions	Min.	Typ.	Max.	Unit.
Input	Forward voltage	V_F	$I_F=20mA$		1.2	1.4	V
	Reverse current	I_R	$V_R=5V$			10	µA
	Capacitance	C_t					pF
	Peak wavelength	λ_p			940		nm
Output	Collector dark current	I_{CEO}	$V_{CE}=10V$		1	100	µA
Light current		I_L	$V_{CE}=5V, I_F=20mA$	0.4		10	mA
C - E saturation voltage		$V_{CE(sat)}$	$I_F=40mA, I_C=250\mu A$		0.15	0.4	V
Switching speeds	Rise time	t_r	$V_{CC}=4.4V, I_C=13mA$			80	µsec.
	Fall time	t_f	$R_L=47k$			80	µsec.

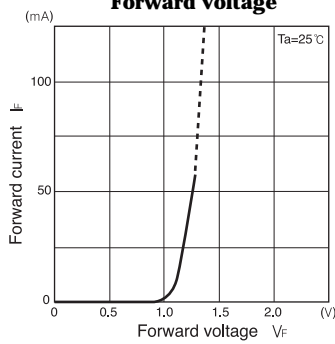
Photo interrupters(Transmissive)

SG - 226

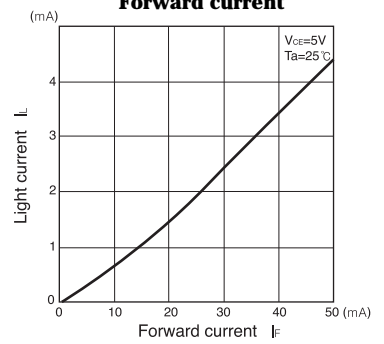
Collector power dissipation Vs. Ambient temperature



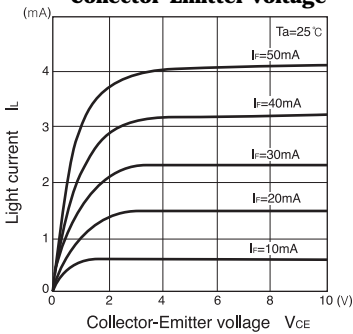
Forward current Vs. Forward voltage



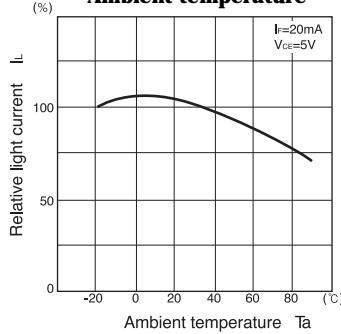
Light current Vs. Forward current



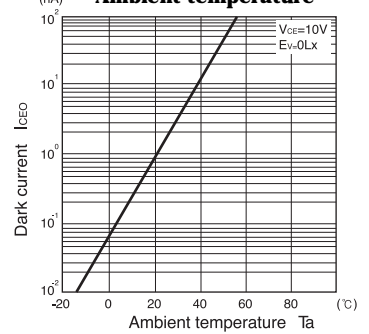
Light current Vs. Collector-Emitter voltage



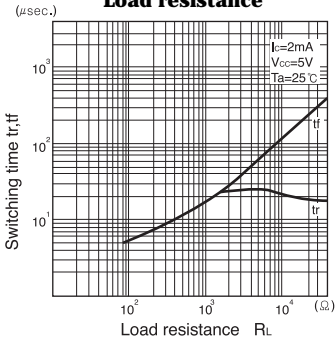
Relative light current Vs. Ambient temperature



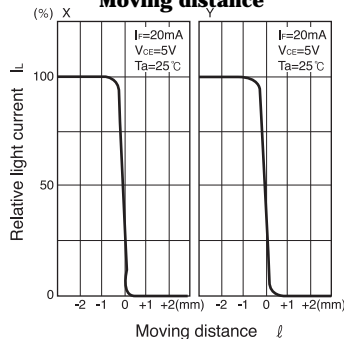
Dark current Vs. Ambient temperature



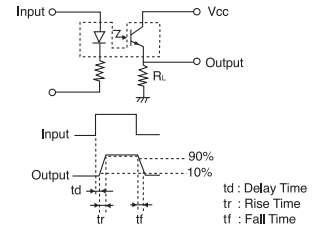
Switching time Vs. Load resistance



Relative light current Vs. Moving distance



Switching time measurement circuit



Method of measuring position characteristic

